



# **LOCAL PLAN FOR SPECIAL EDUCATION**

## **SELPA IV**

SELPA ADMINISTRATIVE UNIT  
1290 Ridder Park Drive  
San Jose, CA 95131  
Phone: (408) 453-6566  
Fax: (408) 453-4337



# **SELPA IV LOCAL PLAN**

## **Table of Contents**

<b>SECTION I</b>	<b>CERTIFICATION OF PARTICIPATION, COMPATIBILITY AND COMPLIANCE ASSURANCES</b>
<b>SECTION II</b>	<b>ASSURANCE STATEMENTS</b>
<b>SECTION III</b>	<b>GOVERNANCE</b>
<b>SECTION IV</b>	<b>ANNUAL SERVICE DELIVERY PLAN</b>
<b>SECTION V</b>	<b>INTER-AGENCY AGREEMENT</b>
<b>SECTION VII</b>	<b>GENERAL BUDGET ADMINISTRATION</b>



SELPA IV

COMMUNITY ADVISORY COMMITTEE (CAC) CERTIFICATION

DELDA IV

SPECIAL EDUCATION LOCAL PLAN AREA  
LOCAL EDUCATION AGENCY (LEA) ASSURANCES

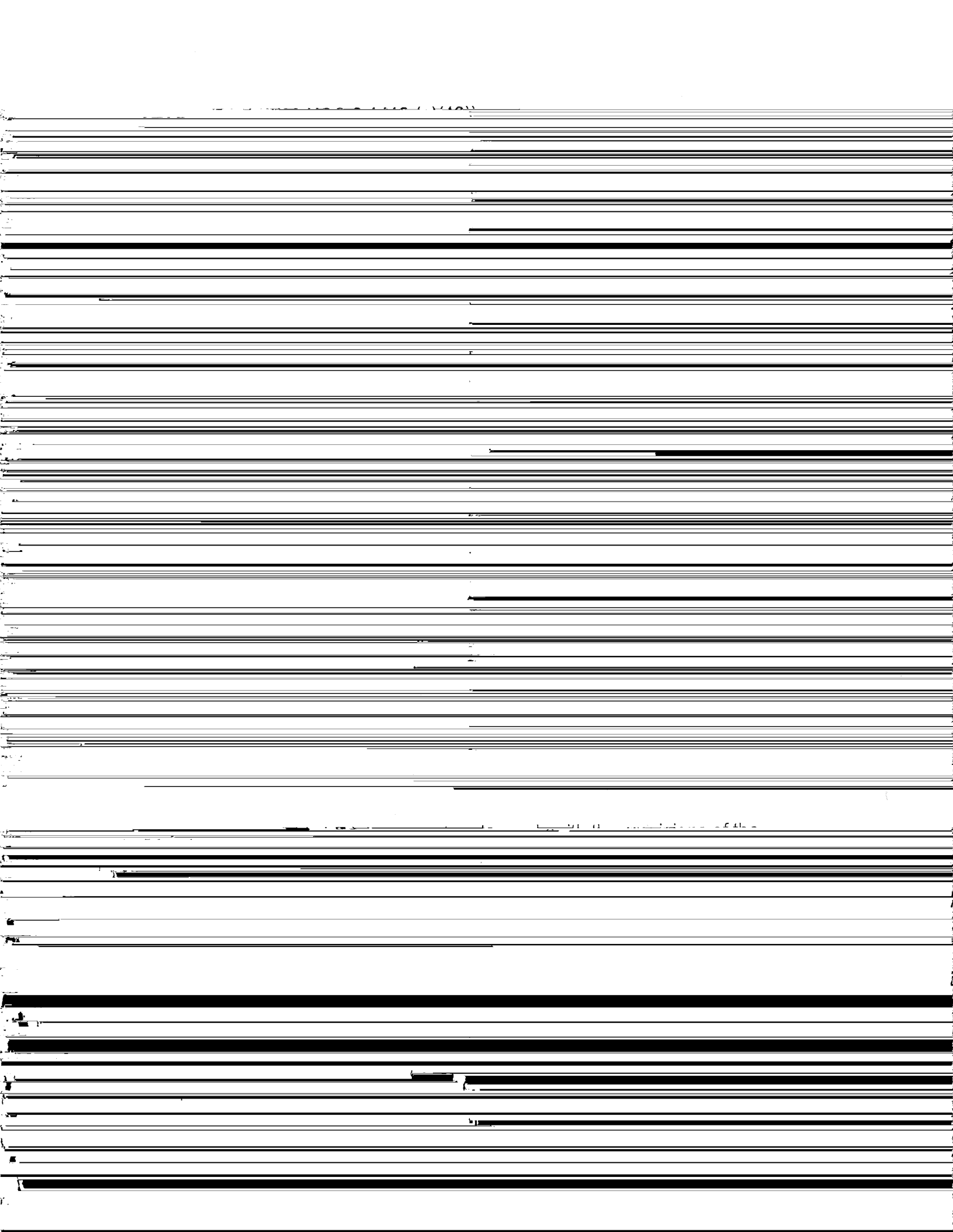
benefit from his/her individualized education program. It shall be the policy of this LEA that a review of an IEP will be conducted on at least an annual basis to review a student's progress and make appropriate revisions.

**PROVIDING AN APPROPRIATE ENVIRONMENT (20 USC § 1412 (a)(5))**

... shall, to the maximum extent appropriate, children with

9. PART C TRANSITION (20 USC § 1412 (a)(9))

It shall be the policy of this LEA that a transition process for a child who is participating



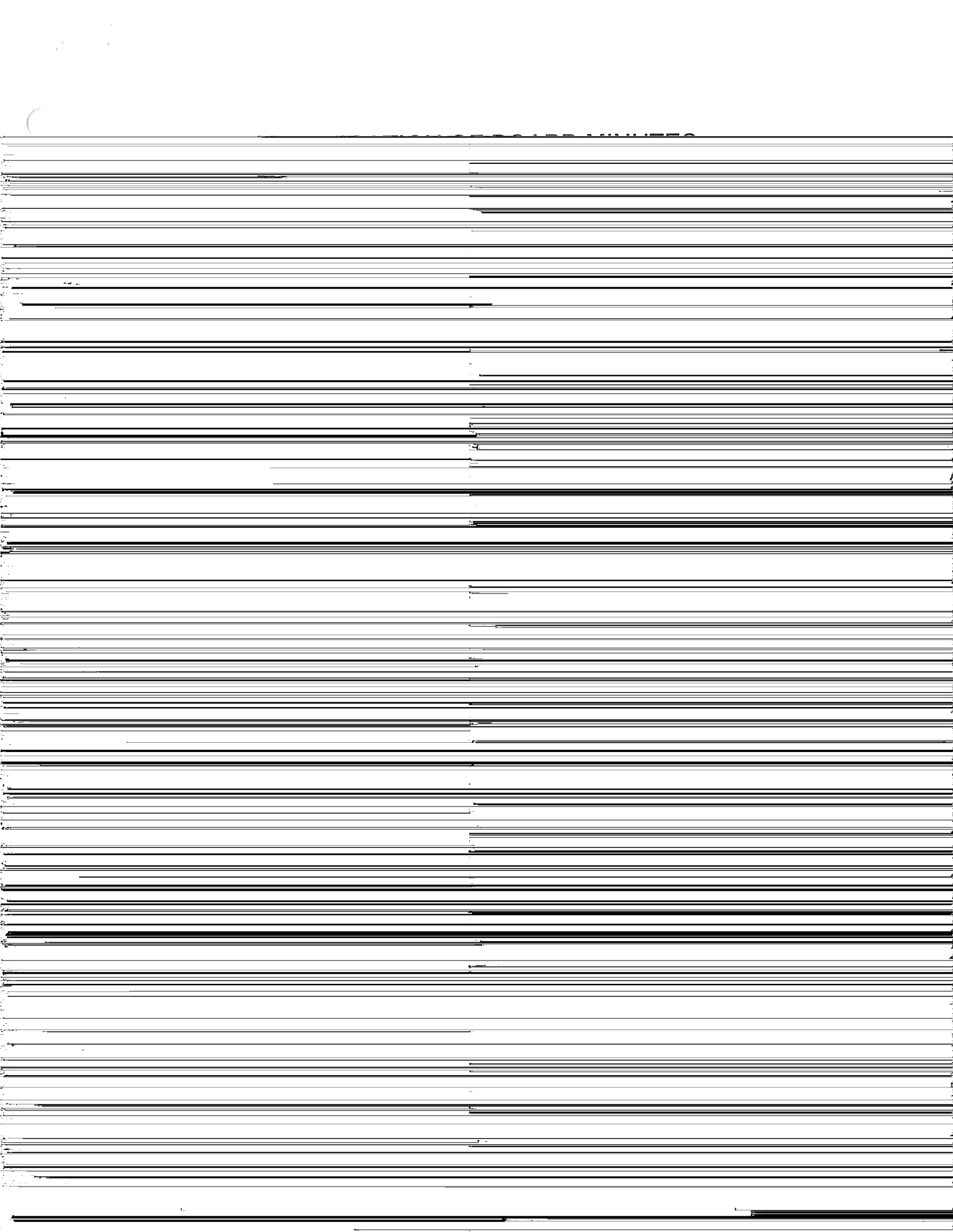


It shall be the policy of this I EA that federal funds will not be used to reduce the level of



CERTIFICATION OF BOARD MINUTES

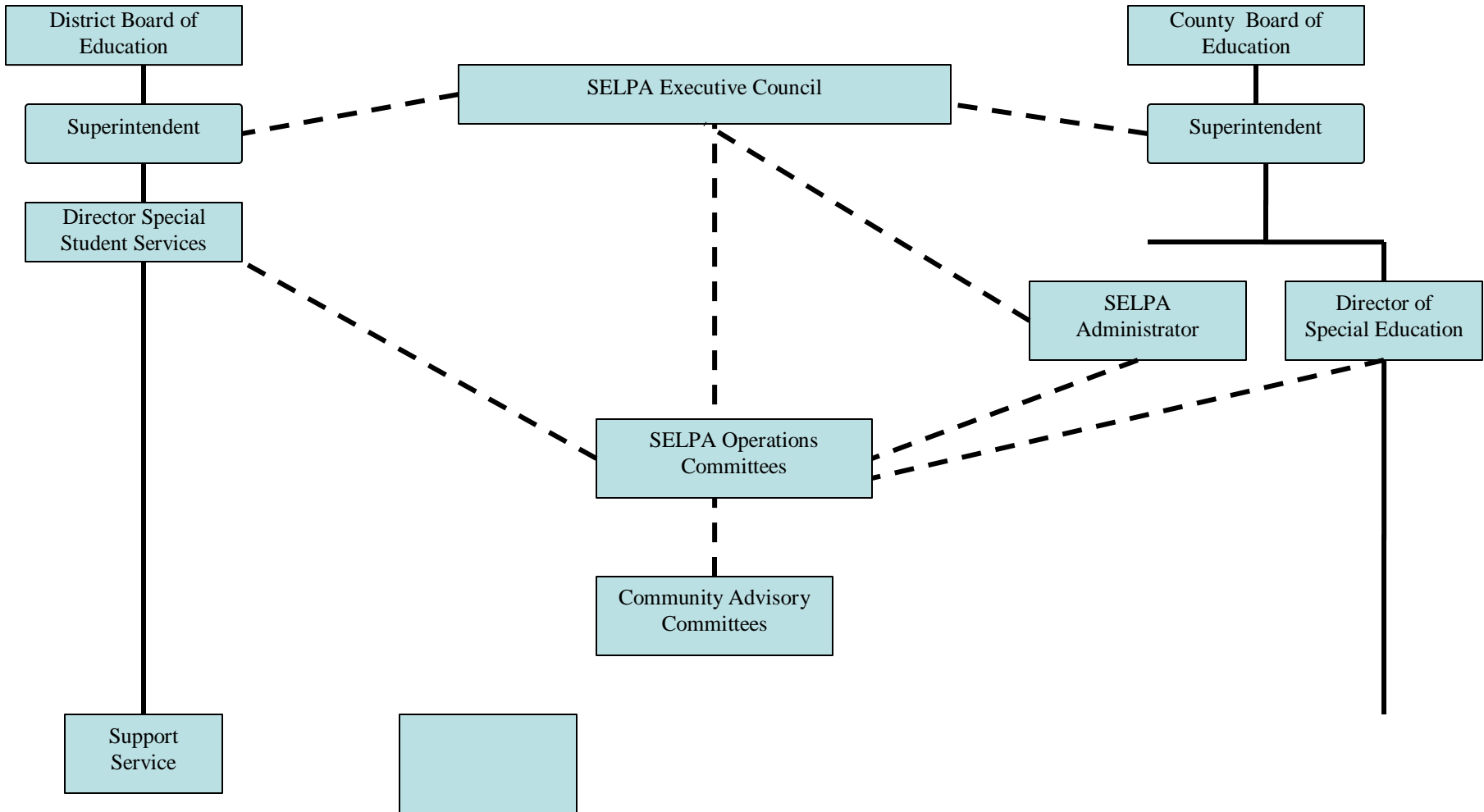
This is to certify that in accordance with Federal and State laws and regulations, the



Santa Clara County Office of Education  
SELPA IV  
Governance Model  
Organizational Chart

**San Jose Unified**

**Santa Clara County**



———— Direct Responsibility

- - - - - Advisory

I. PURPOSE AND INTENT:  
(56195)

The following Santa Clara County public school agencies:

San Jose Unified School District

Santa Clara County Office of Education

join together to adopt a plan in accordance with California Education Code to assure access to special education and services for all individuals with exceptional needs residing in the geographic area served by the San Jose Unified School District hereafter known as SELPA IV Local Plan Area. San Jose Unified School District is a district/county SELPA. In adopting the completed plan, SELPA IV agrees to carry out the duties and responsibilities assigned to it within the plan. The SELPA IV may enter into additional contractual arrangements to meet the requirements of applicable federal and state law.

A. DESCRIPTION OF GOVERNANCE STRUCTURE

GENERAL DESCRIPTION [56205(a), 56205 (a)(12)(A), 56195.1-1(b)(1), 56195.1(c), 56195(c)(1-2)]

SELPA IV in Santa Clara County is comprised of San Jose Unified School District and the Santa Clara County Office of Education. They have joined together in a cooperative effort to provide for the coordinated delivery of programs and services and to provide assurance of equal access to such programs and services to eligible persons with disabilities requiring special education in the services region. The Santa Clara County Office of Education serves as the Administrative Unit (AU) for SELPA IV. It shall be responsible for functions such as, but not limited to:

1. Receipt and distribution of funds to accounts exclusively designated for SELPA use.
- 2.

COMPOSITION AND ORGANIZATION OF THE EXECUTIVE COUNCIL  
56205(a), 56205(a)(12)(A)

1. The SELPA IV Special Education Local Plan Area is governed by an Executive Council composed of two (2) voting superintendents from member LEAs.

2. Representation on the Executive Council is Superintendents from the following:

**San Jose Unified School District** Superintendent of San Jose Unified School District

**Santa Clara County Office of Education** Superintendent of Santa Clara County Office of Education

**Total Voting Members** two (2) No member shall have more than one vote.

3. The Executive Council provides for the approval of policy and related issues, which are necessary to operate SELPA IV. The council is composed of the superintendent, or administrative designee, from the County Office of Education and from San Jose Unified School District. Also participating on the Executive Council but as non-voting members are the District Director, County Office Special Education Director, Business Officials, and program specialists.
4. The SELPA IV Director will serve ex-officio to the Executive Council. The SELPA Director will have a non-voting status on the Executive Council.
5. The Executive Council shall not meet less than four times per school year. The Executive Council meeting calendar will be established at the last meeting of the previous fiscal year for the following school year. The SELPA IV Director shall be responsible for preparing the agenda and all support materials for each meeting. A quorum shall consist of two voting members.
6. The functions of the Executive Council consist of the adoption of policies designed to give direction to SELPA IV in the areas to include, but not be limited to, matters of personnel, budget, policy, and contracts.
7. All meetings of the Executive Council will be held according to law.

REPRESENTATIVE GOVERNANCE COUNCIL(E)-8(L)21(P)-3(A )-7(I)tm535 T7(r99.024 364.1TfscTm)

2. The Council makes all employment decisions regarding the SELPA Director, including selection, supervision, direction, compensation, evaluation, and if necessary, termination. The SELPA Director shall be employed under contractual terms established by the Council.
3. The Council approves the staffing of the SELPA office.
- 4.



disabilities enrolled in the charter school receive special education services in the same manner that is consistent with all applicable provisions of state and federal law.

A charter school may apply to become a LEA for special education purposes. The Executive Council of SELPA IV shall determine whether the charter school has provided requisite assurances. Once approved as a LEA, the charter school shall participate in the governance of the SELPA in the same manner as other school districts within the SELPA.

A request by a LEA or a charter school deemed a LEA to participate as a local educational agency in SELPA IV special education local plan will not be treated differently from a similar request made by a school district. In reviewing and approving a request by a LEA or a charter school to participate as a local agency in SELPA IV, the following requirements shall apply:

The LEA or charter school shall participate in state and federal funding for special education and the allocation plan developed in the same manner as other local educational agencies of the SELPA.

The LEA or charter school shall participate in the governance of the SELPA in the same manner as other local educational agencies of the SELPA.

follow the approval of additional members to the SELPA by the Executive Council.

#### RESPONSIBILITY OF PARTICIPATING AGENCIES

[56205(a)(12)(D)(i), 56195.5(b), 56195.1(b)(2), 56195.1(c)(1)]

Each participating LEA is responsible for implementing those services assigned to the local agency herein and provided for in the local plan budget plans. Each LEA provides assigned programs and services through its own facilities and staff.

When a LEA is unable to provide an appropriate program for an individual pupil, the LEA shall arrange for an appropriate placement, through an Individualized Education Team, in another LEA outside of SELPA IV. The SELPA IV Director will assist the district in a placement outside of SELPA IV. The Santa Clara County Office of Education shall perform the services of a LEA for persons with disabilities residing in Juvenile Court Schools in SELPA IV.

Santa Clara County Office of Education has more than one Local Plan area. Santa Clara COE provides special education services to more than one SELPA. Therefore relevant provisions of contracts between the Santa Clara County Office of Education and its employees governing wage, hours, and



The Executive Council shall:

Adopt policy for SELPA IV

REGIONALIZED SERVICES  
[56205(a)(12)(B)] 56195.7(c)(1-6)]

Administrative Unit Responsibilities

Santa Clara County Office of Education serves as the Administrative Unit (AU) for SELPA IV. The AU provides for the allocation of federal, state, and local property taxes for special education instruction and services. They also assist in the development of the Local Plan, Budget Plan, and Service Delivery Plan for SELPA IV. The AU provides the Management Information System (MIS) reporting for state and federal purposes as well as local counts that have a fiscal impact. Fiscal monitoring and information related to the budget allocation plan and to maintenance of local effort, uses of federal funds, and county tax money is also provided.

SELPA Office

The SELPA Office staff consists of a full time director, who provides staff development, training, and facilitates the decision making process for the SELPA. The clerical staff consists of one supervising administrative assistant, one secretary, a fiscal advisor and a MIS Specialist. The SELPA Office provides for the coordination of policy, fiscal, legal, and programmatic aspects of the Local Plan.

Program Specialists

San Jose Unified School District employs the Program Specialists. The Program Specialists work strictly within the district. The Program Specialist may do all of the following:

1. Observe, consult and assist special education personnel.

Policies Addressing Regionalized Services shall include but not be limited to:

- Interagency coordination and development of agreements
- Non-Public school /agency coordination and development of master contracts including rate setting on behalf of member LEAs and uniform procedures for individual service agreements
- Provision of Program Specialist service

not to serve as the AU, the Executive Council or the Santa Clara County Office of Education, whichever party seek the change, shall notify the other party of its decision at least one year prior to the proposed effective date of the implementation to the alternative plan. In any fiscal year should the Executive Council choose to contract with an agency other than the AU to perform some or all of the services which the AU has been performing, it shall notify the AU at least one year prior to the proposed effective date of the implementation to the alternative plan. An agreement for services as the AU shall be drawn to define the role and function of the AU.

2. SELPA IV DIRECTOR  
[56205(a)(12)(D)(ii)] 56205(a)(12)(B), 56205(a)(12)(D)(ii)(III),  
56205(a)(12)(D)(ii)(V)

The SELPA IV Director shall serve as the Chief Administrator of the SELPA to implement the Local Plan for Special Education including the following:

1. Provide overall coordination of the Local Plan
2. Serve as ex-Representative Governance Council
3. Serve as ex-officio secretary to the Executive Council
4. Arrange for meetings, establish agendas, and record minutes as appropriate for the Executive Council
5. Implement the regionalized services of the SELPA:
  - a. Administer staff development programs.
  - b. Coordinate program review.
  - c. Supervise data collection, information management and reporting.
  - d. Coordinate curriculum and program development.
  - e. Coordinate the monitoring of Local Plan implementation through program review.
  - f. Other matters related to the representation and operation of the SELPA.
6. Conduct the business operations for SELPA IV
7. Hire, supervise, evaluate and discipline staff employed by the SELPA in support of the Local Plan. [56205(a)(12)(D)(ii)(I)]
8. Assist in the development of the annual budget plan and annual SELPA operations budget.
9. Allocate and distribute funds to LEAs for the operation of special education programs and services in accordance with policy.
10. Coordinate the funds for low incidence services, equipment and materials in accordance with established procedures.
11. Complete reports for SELPA IV and individual districts in accordance with State priority criteria and Education Code Sections 56220(c)(1), 56368, and 56780.



Reviewing and recommending budget priorities to the Executive Council.



## C. AMENDING THE LOCAL PLAN

### LOCAL PLAN AMENDMENTS

The SELPA IV Local Plan can be amended for any one of the following reasons:

Change in federal or state law or regulation

A new interpretation of the law is presented by the court system

When there is an official finding of non-compliance with federal or state law or regulation

When SELPA IV representatives choose to amend the contents of the Local Plan

Changes or amendments to the Local Plan will be considered during the annual service and budget plan process. The Executive Council can adopt amendments to the permanent portion of the local plan on an interim basis, not to exceed one year. Amendments approved in this manner would become permanent upon the subsequent approval by all LEAs governing boards and the State Board of Education.

SELPA IV is required to submit an "ANNUAL SERVICE DELIVERY PLAN" to the  
California Department of Education, Office of Special Education, 1400

- Support for the family

This includes home instruction which is provided by various members of an

instructional team including but not limited to the following:

EARLY EDUCATION SERVICES THREE TO FIVE(PRESCHOOL)

EC 56205(b)(3)

For information on child development services three years to children as determined by the IEP



CALIFORNIA SPECIAL EDUCATION MANAGEMENT INFORMATION SYSTEM (CASEMIS) SERVICE DESCRIPTIONS

2018-2019 SELPA 4304 -- Santa Clara County Area 4

California Department of Education  
Form ASP-01a (rev March 2017)

Special Education Division

CASEMIS Code	SPECIAL EDUCATION SERVICE CATEGORY DESCRIPTIONS	Adopted	Modified	Not Currentl y Utilized	Compliance Standard (Legal Requirement)
-----------------	--	---------	----------	----------------------------------	--

Services will be provided in the school of attendance unless otherwise determined by the IEP team.

CALIFORNIA SPECIAL EDUCATION MANAGEMENT INFORMATION SYSTEM (CASEMIS) SERVICE DESCRIPTIONS

2018-2019 SELPA 4304 -- Santa Clara County Area 4

California Department of Education  
Form ASP-01a (rev March 2017)

Special Education Division

CASEMIS  
Code

Services will be provided in the school of attendance unless otherwise determined by the IEP team.

CALIFORNIA SPECIAL EDUCATION MANAGEMENT INFORMATION SYSTEM (CASEMIS) SERVICE DESCRIPTIONS

2018-2019 SELPA 4304 -- Santa Clara County Area 4

California Department of Education  
Form ASP-01a (rev March 2017)

Special Education Division

CASEMIS Code	SPECIAL EDUCATION SERVICE CATEGORY DESCRIPTIONS	Adopted	Modified	Not Currently Utilized	Compliance Standard (Legal Requirement)
425	<p><b>Adapted physical education:</b> Direct physical education services provided by an adapted physical education specialist to pupils who have needs that cannot be adequately satisfied in other physical education programs as indicated by assessment and evaluation of motor skills performance and other areas of need. It may include individually designed developmental activities, games, sports and rhythms, for strength development and fitness, suited to the capabilities, limitations, and interests of individual students with disabilities who may not safely, successfully or meaningfully engage in unrestricted participation in the vigorous activities of the general or modified physical education program.</p>				5 CCR 3051.5; 30 EC 56363; 34 CFR 300.108, 300.39 (b)(2)
435	<p><b>Health and nursing – specialized physical health care services:</b> Specialized physical health care services means those health services prescribed by the child’s licensed physician and surgeon, requiring medically related training of the individual who performs the services and which are necessary during the school day to enable the child to attend school (5 CCR 3051.12(b)). Specialized physical health care services include but are not limited to suctioning, oxygen administration, catheterization, nebulizer treatments, insulin administration and glucose testing.</p>				5 CCR 3051.12; 30 EC 56363; 34 CFR 300.107; CEC 49423.5(d)
436	<p><b>Health and nursing – other services:</b> This includes services that are provided to individuals with exceptional needs by a qualified individual pursuant to an IEP when a student has health problems which require nursing intervention</p>				

Services will be provided in the school of attendance unless otherwise determined by the IEP team.



CALIFORNIA SPECIAL EDUCATION MANAGEMENT INFORMATION SYSTEM (CASEMIS) SERVICE DESCRIPTIONS

2018-2019 SELPA 4304 -- Santa Clara County Area 4

California Department of Education  
Form ASP-01a (rev March 2017)

Special Education Division

CASEMIS Code	SPECIAL EDUCATION SERVICE CATEGORY DESCRIPTIONS	Adopted	Modified	Not Currently Utilized	Compliance Standard (Legal Requirement)
--------------	---	---------	----------	------------------------	---

**Assistive technology services:** Any specialized training or technical support for the incorporation of assistive devices, adapted computer technology or specialized media with the educational programs to improve access for students. The term includes a functional analysis of the student's needs for

**445**

Services will be provided in the school of attendance unless otherwise determined by the IEP team.

CALIFORNIA SPECIAL EDUCATION MANAGEMENT INFORMATION SYSTEM (CASEMIS) SERVICE DESCRIPTIONS

2018-2019 SELPA 4304 -- Santa Clara County Area 4

California Department of Education  
Form ASP-01a (rev March 2017)

Special Education Division

CASEMIS Code	SPECIAL EDUCATION SERVICE CATEGORY DESCRIPTIONS	Adopted	Modified	Not Currently Utilized	Compliance Standard (Legal Requirement)
460	<p><b>Physical therapy:</b> These services are provided, pursuant to an IEP, by a registered physical therapist, or physical therapist assistant, when assessment shows a discrepancy between gross motor performance and other educational skills. Physical therapy includes, but is not limited to, motor control and coordination, posture and balance, self-help, functional mobility, accessibility and use of assistive devices. Services may be provided within the classroom, other educational settings or in the home; and may occur in groups or individually. These services may include adaptations to the student's environment and curriculum, selected therapeutic techniques and activities, and consultation and collaborative interventions with staff and parents.</p>				<p>5 CCR 3051.6; 30 EC 56363; 34 CFR 300.34 (c)(9); B&amp;PC Ch. 5.7, 2600-2696; GC-Interagency Agreement Ch. 26.5, 7575(a)(2)</p>
510	<p><b>Individual counseling:</b> One-to-one counseling, provided by a qualified individual pursuant to an IEP. Counseling may focus on aspects, such as educational, career, personal; or be with parents or staff members on learning problems or guidance programs for students. Individual counseling is expected to supplement the regular guidance and counseling program.</p>				<p>5 CCR 3051.9; 34 CFR 300.34(c)(2)</p>
515	<p><b>Counseling and guidance:</b> Counseling in a group setting, provided by a qualified individual pursuant to an IEP. Group counseling is typically social skills development, but may focus on aspects, such as educational, career, personal; or be with parents or staff members on learning problems or guidance programs for students. IEP-required group counseling is expected to supplement the regular guidance and counseling program.</p> <p>Guidance services include interpersonal, intrapersonal or family interventions, performed in an individual or group setting by a qualified individual pursuant to an IEP. Specific programs include social skills development, self-esteem building, parent training, and assistance to special education students supervised by staff credentialed to serve special education students. These services are expected to supplement the regular guidance and counseling program.</p>				<p>5 CCR 3051.9; 34 CFR 300.24.(b)(2), 300.306</p>

Services will be provided in the school of attendance unless otherwise determined by the IEP team.



CALIFORNIA SPECIAL EDUCATION MANAGEMENT INFORMATION SYSTEM (CASEMIS) SERVICE DESCRIPTIONS

2018-2019 SELPA 4304 -- Santa Clara County Area 4

California Department of Education  
Form ASP-01a (rev March 2017)

Special Education Division

CASEMIS Code	SPECIAL EDUCATION SERVICE CATEGORY DESCRIPTIONS	Adopted	Modified	Not Currently Utilized	Compliance Standard (Legal Requirement)
535	<b>Behavior intervention services:</b> A systematic implementation of procedures designed to promote lasting, positive changes in the student's behavior resulting in greater access to a variety of community settings, social contacts, public events, and placement in the least restrictive environment.				5 CCR 3001(d); 34 CFR 300.34 (c)(10)
540	<b>Day treatment services:</b> Structured education, training and support services to address the student's mental health needs.				Health & Safety Code, Division 2, Chapter 3, Article 1, Section 1502
545	<b>Residential treatment services:</b> A 24-hour out-of-home placement that provides intensive therapeutic services to support the educational program.				Welfare and Institutions Code, Part 2, Chapter 2.5, Article 1, Section 5671
610	<b>Specialized services for low incidence disabilities:</b> Low incidence services are defined as those provided to the student population of orthopedically impaired (OI), visually impaired (VI), deaf, hard of hearing (HH), or deaf-blind (DB). Typically, services are provided in education settings by an itinerant teacher or the itinerant teacher/specialist. Consultation is provided to the teacher, staff and parents as needed. These services must be clearly written in the student's IEP, including frequency and duration of the services to the student.				5 CCR 3051.16, 3051.18; 34 CFR 300.34
710	<b>Specialized deaf and hard of hearing services:</b> These services include speech therapy, speech reading, auditory training and/or instruction in the student's mode of communication. Rehabilitative and educational services; adapting curricula, methods, and the learning environment; and special consultation to students, parents, teachers, and other school personnel may also be included.				5 CCR 3051.16, 3051.18; 34 CFR 300.34

Services will be provided in the school of attendance unless otherwise determined by the IEP team.











Special Education Local Plan Area:  
4304 - Santa Clara Area 4 SELPA

Local Educational Agency:  
San Jose Unified School District  
4369666

## ANNUAL SERVICE PLAN (001)

Location		Services Provided at this Location										
A. The services listed in the boxes to the right (☐) are provided at all schools in the LEA.		330	425	445	450	510	515	535	710	715	720	
		725	730	735	745	750	755					
B. List all physical locations where services are provided in the LEA. Also, list any other services that are provided and not listed in Box A above.		Type of Facility (See Below)	<b>Nature of Service</b> List the California Special Education Management Information System (CASEMIS) code associated with each service that is provided at the location listed in the left-hand column.									
4333795 Abraham Lincoln High	10	340	415	530	820	830	840	850	855	860	865	
		890										
6048417 Allen at Steinbeck	10	340	415									
6048425 Almaden Elementary	10	415										
6048433 Anne Darling Elementary	10	415	520									
6048474 Booksin Elementary	10	340	415									
6060099 Bret Harte Middle	10	340	415									
4332119 Broadway High	20	350	415	530	820	830	840	860	865	870	890	
6048490 Canoas Elementary	10	340	415	530								
6095418 Castillero Middle	10	340	415	820	840							
4330585 Downtown Coll Preparato	55	415	820	840	850							
0129718 Downtown Coll Prep Midd	55	415										
6048516 Empire Gardens Elementa	10	340	415									
6119010 Ernesto Galarza Elementa	10	340	350	415	610							
6048532 Gardner Elementary	10	415										
6048540 Grant Elementary	10	340	415	435								
6093082 Graystone Elementary	10	340	415	436								
	10	340	415	820	830	840	850	855	860	870	890	
6048722 Hacienda Science/Environ	10	340	415									
6048565 Hammer Montessori at Gal	10	415										
	10	340	350	415	865							
	10	415										
	10	340	415	890								
	10	340	415	545	820	830	840	850	865	870	890	
		340	415	820	830	840	850	855	860	865	870	
		890										
	10	820	840									
6093074 Los Alamitos Elementary	10	340	415									
6048649 Lowell Elementary	10	415										

	11 - Public Residential School
20 - Continuation School	
24 - Independent Study	
55 - Charter School (operated BY an LEA/District/COE)	



Site Name	Type of Facility (see below)	330	340	415	450	515	535	725	730	850
6130900 Alpine Academy - UT [NP:		890								
		330	340	415	450	510	515	535	820	830
		840	850	855	865	870	890			

Special Education Local Plan Area:  
4304 - Santa Clara Area 4 SELPA

Local Educational Agency

Site Name	Type of Facility					
6048417 Allen at Steinbeck	10	330	415	450		
6048425 Almaden Elementary	10	330	340	415	450	
6048433 Anne Darling Elementary	10	415				
6048490 Canoas Elementary	10	330	415			
6119010 Ernesto Galarza Elementar	10	330	415	450		
6048722 Hacienda Science/Environm	10	330	415	450		
6093074 Los Alamitos	10	330	415	450		
6048649 Lowell Elementary	10	330	415	450	535	
6048698 Selma Olinder Elementary	10	330	415			
6048714 Terrell Elementary	10	330	350	415	450	
6048748 Washington Elementary	10	415				

330 415

- B. List all physical locations where services are provided in the LEA. Also, list any other services that are provided and not listed in Box A above.

Please ensure that the following are included on this form:

10 - Public Day School

15 - special Education Center/Facility

20 - Continuation School

24 - Independent Study

55 - Charter School (operated **BY** an LEA/District/COE)

11 - Public Residential School

19 - Other Public School/Facility

22 - Alternative Work D2( P)-4.5 (u)-~~9~~ (b)-~~9~~ Rli-0. ~~8~~(t)7.7 (iv)13 (na)3.

31 - Community School

56 - Charter School (operated **AS** an LEA)

330 415

B. List all physical locations where services are provided in the LEA. Also, list any other services that are provided and not listed in Box A above.

Type of Facility (See Below)

	10	340	350	450	725	730							
	10	340	425	435	450	460	725	730					
	10	450	510	515	520	535							
		340	350	425	436	450	515	820	830	840	850	855	
		860	865	870	890								
	15	350											
6069371 Connect Bascom [COE]	15	515	710	715	720	725	820	840	850	860	865	870	
		890											
	10	340	425	435	450	710	715	720	725	730			
		340	350	425	435	436	450	730	830	840	850	855	
		860	865	870	890								
	55	340	450	510	515	725							
	10	340	450	535									
	10	340	425	450	515	715	720	820	840	860	865	890	
	10	340	425	450	730								
	10	340	425	450									
6049415 Oster Elementary [COE]	10	340	425	450	515	710	715	720	725				
	10	340	425	450	725								
	10	340	425	450									
	10	435	436	860									
	10	340	350	425	450	820	830	840	860	865	870	890	

Special Education Local Plan Area:  
4303 - Santa Clara Area 3 SELPA

Local Educational Agency :  
Santa Clara County Office of Education  
4310439

## Other Facilities (002)

List the site name and type of facility providing services to students enrolled in the LEA		Services Provided at this Location							
		List the California Special Education Information System (CASEMIS) code associated with each service that is provided at the location listed in the left-hand column							
	70	330	340	415	510	535	450	890	
6908222 Achieve Kids San Jose [NPS]	70								
6979090 Esther B Clark at CHC [NPS]	70	330	445	510	515	520			
6959363 Morgan Autism Center [NPS]	70	330	415	450	860				
6953418 PACE [NPS]	70	330	340	415	450	890			
7002322 Palo Alto Prep [NPS]	70	330	510	820	840				
6130389 Spectrum Center	70	330	340	415	425	450	510	515	520
		730	820	830	840	850	855	860	865
		870	890						
7103534 The Bay School [NPS]	70	330	340	415	450	850	860	865	890

Use these codes to identify the type of facility providing services to students ages 6-22:

30-Juvenile Court School	32-Correctional Institution or Incarceration Facility	40-Home Instruction
45-Hospital Facility	50-Community College	51-Adult Education Program
70-Nonpublic Day School	71/72-Nonpublic Residential School	79-Nonpublic Agency

Special Education Local Plan Area:  
4303 - Santa Clara Area 3 SELPA

Local Educational Agency :  
Santa Clara County Office of Education  
4310439

Site Name	Type of Facility
	210 240 250 415 435 436 450 460
	610 725
	210 240 250 415 436 450 460 710
	725
	210 240 250 415 436 450 460 725
	740

40-Home  
62-Child Development or Child Care Facility

45-Hospital Facility



Special Education Local Plan Area:  
4303 - Santa Clara Area 3 SELPA

Local Educational Agency :  
Santa Clara County Office of Education  
4310439

## Pre-School Services (004)

List the site name and type of facility providing services to students enrolled in the LEA		Services Provided at this Location					
Site Name	Type of Facility	List the California Special Education Management Information System (CASEMIS) code associated with each service that is provided at the location listed in the left-hand column					
6049068 Argonaut Elementary [COE]	10	330	350	415	450	535	725
6046510 Blackford	10	330	415	425			
6049530 Chandler Tripp (Preschool)	10	330	340	350	415	450	460
		725	730				
6046601 Lynhaven	10	330	415	450	725		
6049415 Oster	10	330	340	350	415	450	715
		720					
Parkway Elem (Preschool)	10	330	415	450			

Use these numbers to identify the type of facility where Pre-School Services (ages 3-5) are provided:

40-Home Instruction	45-Hospital Facility
61-Head Start Program	62-Child Development or Child Care Facility
63-State Preschool Program	
10-Public Day School	19-Other Public School/Facilities

California Department Box A above.

	10	340	350	415	425	435	450	610	860				
	10	340	415	425	450								
		340	350	415	425	450	535	725	730	830	840	850	
		855	860	865	870	890							
	55	340	415	450	510	515	710						
	10	340	415	425	435	450	730						
		340	350	415	425	450	730	830	840	850	855	860	
		865	870	890									
6093090 Rachel Carson Eleme	10	340	415	435	436	450	460	725					
	10	415	425	510	515	520							
	31	415											
	55	415	515	820	840	860	890						

Please ensure that the following are included on this form:

10 - Public Day School

15 - special Education Center/Facility

20 - Continuation School

24 - Independent Study

55 - Charter School (operated **BY** an LEA/District/COE)

11 - Public Residential School

19 - Other Public School/Facility

22 - Alternative Work Education Center/Work Study Program

31 - Community School

56 - Charter School (operated **AS** an LEA)

6048433 Anne Darling Elementary [C	40	330	340	415	450	860			
		330	415	510	515	530	820	830	840
		860	890						
8430400 Santa Clara County Main Ja:	32	330	890						

Special Education Local Plan Area:  
 4304 - Santa Clara Area 4 SELPA

Local Educational Agency :  
 Santa Clara County Office of Education  
 4310439

## Pre-School Services (004)

List the site name and type		List the California Special Education Management Information System (CASEMIS) code associated with each service that is provided at the location listed in the left-hand column					
Site Name	Type of Facility	330	340	350	415	450	710
6048417 Allen at Steinbeck [COE]	10	330	340	350	415	450	
6048433 Anne Darling Elementary [COE]	10	330	340	415	450	460	710
		725					
6084730 Bachrodt Academy [COE]	10	330	415	535			
6093090 Rachel Carson Elementary [COE]	10	330	415	450			

Use these numbers to identify the type of facility where Pre-School Services (ages 3-5) are provided:

40-Home Instruction	45-Hospital Facility
61-Head Start Program	62-Child Development or Child Care Facility
63-State Preschool Program	64-Private Preschool
65-Extended Day Care Program	11-Public Residential School
10-Public Day School	19-Other Public School/Facilities

Special Education Local Plan Area:  
 4307 - Santa Clara Area 7 SELPA

Local Educational Agency :  
 Santa Clara County Office of Education  
 4310439

## ANNUAL SERVICE PLAN (001)

### Location

A. The services listed in the boxes to the right (☑) are provided at all schools in the LEA.

330

B. List all physical locations where services are provided in the LEA. Also, list any other services that are provided and not listed in Box A above.

Type  
of  
Facility  
(See  
Below)

### Nature of Service

List the California Special Education Management Information System (CASEMIS) code associated with each service that is provided at the

	10		340	415	425	450	510	515	520				
6069371 Monticello [COE]	15		340	415	450	830	840	850	855	860	865	870	890
4330122 Santa Clara High [CO	10		340	415	425	450	725	830	850	855	860	865	870
			890										

Please ensure that the following are included on this form:

- |  |  |
|--|--|
| <ul style="list-style-type: none"> <li>10 - Public Day School</li> <li>15 - special Education Center/Facility</li> <li>20 - Continuation School</li> <li>24 - Independent Study</li> <li>55 - Charter School (operated <b>BY</b> an LEA/District/COE)</li> </ul> | <ul style="list-style-type: none"> <li>11 - Public Residential School</li> <li>19 - Other Public School/Facility</li> <li>22 - Alternative Work Education Center/Work Study Program</li> <li>31 - Community School</li> <li>56 - Charter School (operated <b>AS</b> an LEA)</li> </ul> |
|--|--|

Special Education Local Plan Area:  
4307 - Santa Clara Area 7 SELPA

Local Educational Agency :  
Santa Clara County Office of Education  
4310439

Site Name	Type of Facility (see below)	List the California Special Education Information System (CASEMIS) code associated with each service that is provided at the location listed in the left-hand column		
6069371 Monticello	40	350	860	

Use these codes to identify the type of facility providing services to students ages 6-22:

30-Juvenile Court School

32-Correctional Institution or  
Incarceration Facility

40-Home Instruction

45-Hospital Facility

50-Community College

51-Adult Education Program

70-Nonpublic Day School

71/72-Nonpublic Residential School

79-Nonpublic Agency

330

B. List all physical locations where services are provided in the LEA. Also, list any other services that are provided and not listed in Box A above.

Type of Facility (See Below)

10	340	415	425	435	436	450	535					
10	340	415	425	450	535							
10	415	510	515									
	340	415	425	436	445	450	460	535	725	730	855	
	860	890										
10	340	415	425	450	535							
10	340	415	425	450	535							
10	340	415	425	450	535							
10	340	415	425	730	820	840	855	860				
55	415	425	450	510	515	710	820	830	840	890		
10	415	510	515	520	820	840	850	855	860	890		
	340	415	425	435	450	510	515	725	730	830	840	
	855	860	865	870	890							
10	340	415	425	450	535	725						







Special Education Local Plan Area:  
 4311 - South East Consortium

Local Educational Agency :  
 Santa Clara County Office of Education  
 4310439

## Pre-School Services (004)

**List the site name and type of facility providing services to students enrolled in the LEA**

**Services Provided at this Location**

List the Califoefsa-1.606 3sfhealif4.osfst t aloel.1 (o)(n 3)

Site Name	Type of Facility	330	340	415	435	436	450
6047583 Alexander Rose Elementary	10	535	725				
6095400 Baldwin (Julia) Elementary	10	330	340	350	415	450	535
6089288 Cherrywood Elementary [COE]	10	330	415	450			
6085492 Gateway Center [COE]	10	330	340	350	415	450	
6048060 Marlatt Preschool [COE]	10	330	415	450	535		
6102081 Norwood Creek Elementary	10	330	340	415	425	450	535
6115943 Wool Creek Preschool [COE]	10	725	730				
		330	415	450	535	725	

Use these numbers to identify the type of facility where Pre-School Services (ages 3-5) are provided:

- 40-Home Instruction
- 61-Head Start Program
- 63-State Preschool Program
- 65-Extended Day Care Program
- 10-Public Day School

- 45-Hospital Facility
- 64-Private Preschool
- 11-Public Residential School
- 19-Other Public School/Facilities

Santa Clara County Office of Education

LOCAL INTERAGENCY AGREEMENT BETWEEN  
SANTA CLARA COUNTY OFFICE OF EDUCATION HEAD START PROGRAM  
AND  
SPECIAL EDUCATION LOCAL PLAN AREAS WITHIN SANTA CLARA COUNTY

Approved by Countywide Directors of Special Education

This joint agreement between the Head Start Program and Special Education Local Plan Area, Local Education Agency will be developed according to the provisions of Federal and State Regulations for

[Redacted content]





Head Start and IFA will collaborate on the provision of parent information and staff development

activities.

Local Education Agency

Head Start program

1. Shall inform parents and staff of Parents' Rights under Individuals with Disabilities Education Improvement Act (IDEA 2004) as it applies to the Local Education Agency.
2. Shall permit Head Start Teacher to visit Special Day Class or other special programs such as speech therapy.

1. Shall inform parents and staff of Parents' Rights under the Head Start Act.
2. Shall permit specialists to observe child with IEP in Head Start classrooms.

**V. Procedural Safeguards**

The child shall be afforded procedural safeguards and confidentiality of records in compliance with

[REDACTED]

**Local Education Agency**

**Head Start Program**

1. Shall ensure compliance with all procedural

1. Shall ensure that all procedural safeguards

[REDACTED]

[REDACTED]

[REDACTED]

[REDACTED]

safeguards, confidentiality of records, and placement in the least restrictive environment

including confidentiality of records, and enrollment in the appropriate Head Start

[REDACTED]

[REDACTED]

[REDACTED]

[REDACTED]

EARLY LEARNING SERVICES- HEAD START PROGRAM

SPECIAL EDUCATION LOCAL PLAN AREA

STUDENT SERVICES DEPARTMENT

SANTA CLARA COUNTY

EARLY LEARNING SERVICES DEPARTMENT  
HEAD START PROGRAM

2 17

SELPA  
North West SELPA I, II, III, IV, VII

Director  
Early Learning Services

Da

Date

Leo Mapagu  
Director, South East Consortium Special Education  
South East Consortium Special Education



**MEMO OF UNDERSTANDING**  
BETWEEN  
**SAN ANDREAS REGIONAL CENTER,**  
**SANTA CLARA COUNTY SELPAS**  
AND  
**SANTA CLARA COUNTY OFFICE OF EDUCATION**

**Implementation of *Part C* of the *Individuals with Disabilities Education Act*  
and California's *Early Start*  
*July 2017-June 2020***

***Education Improvement Act***  
***m***

**1. PURPOSE**

The purpose of this agreement is to describe policies and procedures of the San Andreas Regional Center (SARC), Santa Clara County Special Education Local Plan Areas



#### 4. PHILOSOPHY

SARC, SELPAS and COE endorse the philosophy that promotes a coordinated interagency service delivery system for infants and toddlers with special needs and their families within Santa Clara County. Santa Clara County's *Early Start Program* (ESP) service delivery system shall utilize available resources to enhance the ability of the family to promote the

[REDACTED]

growth and development of their infant or toddler, thereby enabling the child to live within the community alongside his or her peers with or without disabilities.

[REDACTED]

2. Collaborating with the local *Family Resource Center* (FRC)— *Parents Helping Parents* (PHP) and other parent organizations or support groups;
3. Distributing early intervention materials to agencies and individuals providing medical, social and educational services in the community;
4. Producing and distributing public service announcements;
5. Producing and distributing pamphlets, brochures and other written communication;

and,

6. Making presentations to local professional groups, philanthropic organizations and other organizations established to inform and/or to serve culturally diverse

populations.

SARC and COE shall inform primary referral sources of

1. the eligibility criteria for early intervention services;
2. types of early intervention services available through the Early Start Program;

*B. Maintenance of Effort*

The COE will serve all eligible infants and toddlers with solely low-incidence disabilities. Solely low incidence disabilities are: blind/visually impaired; deaf/hard of hearing; deaf-blind or severe orthopedic impairment or a combination thereof.

COE shall provide special education and related services to infants who meet both COE

[REDACTED]

& SARC eligibility criteria provided COE does not exceed its 1980-81 mandated cap of 171 (= 128 dual eligible + 43 solely low incidence) eligible infants or toddlers **plus newly** identified infants or toddlers with solely low incidence disabilities. COE agrees for the **2017-2018; 2018-2019; 2019-2020** school years, to serve dually eligible children with

[REDACTED]

[REDACTED]

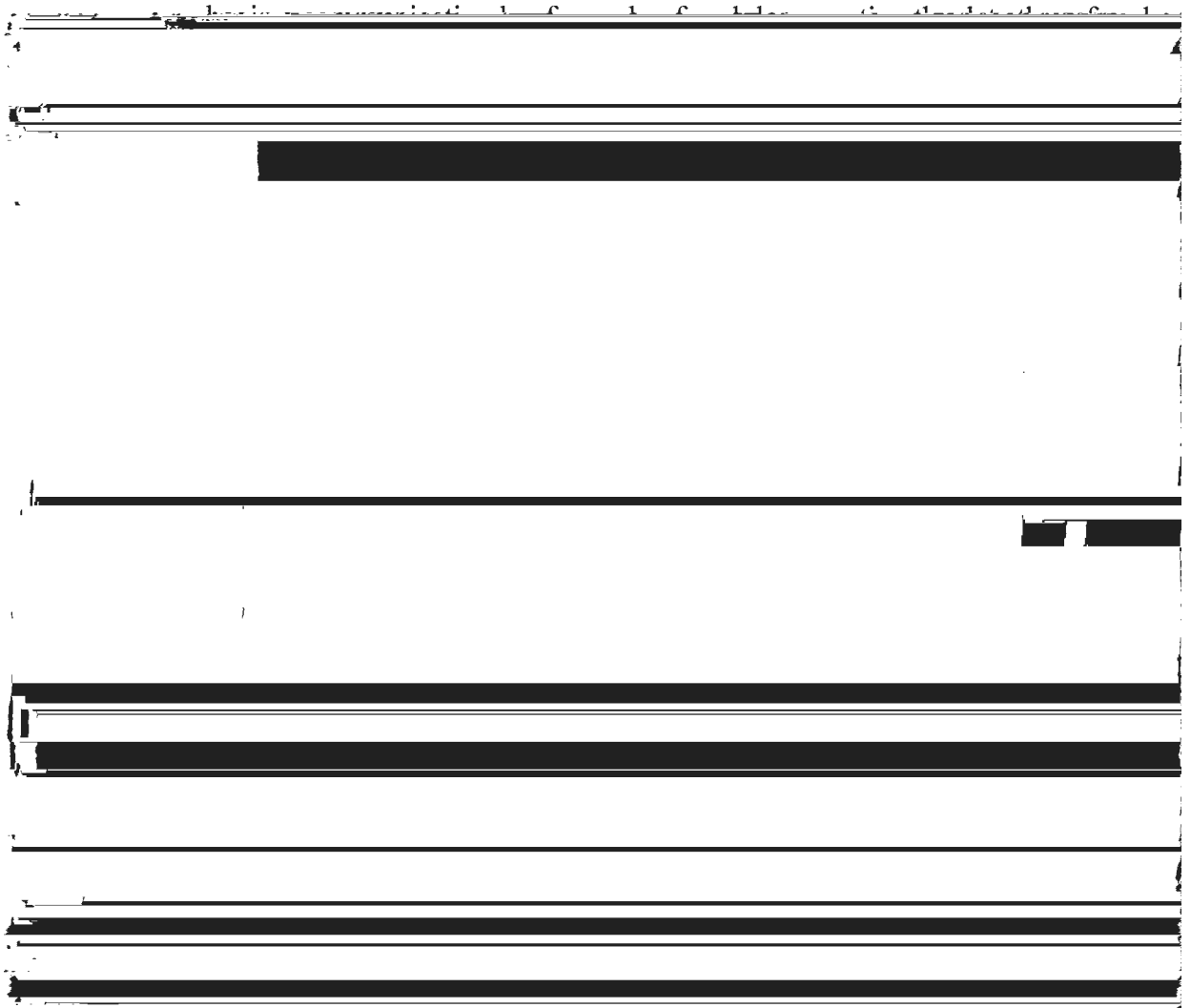
## 8. PROGRAM IMPLEMENTATION POLICIES

The ESP receives referrals for residents of Santa Clara County from a variety of individuals, public and private agencies and other sources. All referrals should be directed to the toll free referral number, which is 1-800-404-5900.

### A. Referral Procedures

All referral information is entered onto a computer database that is accessible to and meets the needs of all parties. All of the local elementary school districts in Santa Clara County have agreed to complete assessments on children who are 2 years-10 months on the day of referral. A joint referral will be made to SARC regular intake department for these children aged 2.10 through 3 years old so that they can proceed with determination of eligibility for regional center services and establishment of an IFSP as appropriate.

The ESP *eligibility enrollment specialist* will:



The initial evaluation and assessment for eligibility for each infant or toddler shall be completed within 45 days from the time of the referral. *Exceptional circumstances* beyond the control of the ESP which make it impossible to complete the initial evaluation and assessment within 45 days of the receipt of the referral, will be documented.

*Exceptional circumstances* (CCP Title 17 Section 5000) include but are not limited to:

[REDACTED]

the illness of the child or parent/care provider; the absence of the child from geographic area; inability to locate parent/care provider, a natural disaster, or other circumstance beyond ESP's control. Parents will be informed of the reasons for the delay and their agreement with the reasons for the delay shall be documented. At this time an alternate

[REDACTED]

timeline (which includes a specific date for completing the evaluation as soon as

[REDACTED]

intake meetings with COE. However, at least one contact with the family will occur prior to the IFSP meeting to insure all information is communicated regarding the Early Start

*D. Individualized Family Service Plan (IFSP)*

SARC and COE will participate in the IFSP for any child it is agreed is likely to be served by COE to the extent possible.

In both instances the IFSP will be implemented to the extent possible within existing resources. Before the end of the 30-day period the IFSP services shall be reviewed and

recommendations made by the IFSP team for services. The IFSP team will use information from records and reports from the program from which the child transferred as well as information gathered during the interim services. (California EC 56325 (a) (b))

Part C transition procedures will be followed by SARC, COE and the School District as

Appendix A. SARC, COE, and SELPA will collaborate to conduct joint trainings for SARC Service Coordinators, COE staff, and School District staff regarding Part C transition.



an employee solely because he or she is paid by a regional center, SELPA, LEA, or COE to serve as a surrogate parent.

~~C. A surrogate parent may represent an infant or toddler in all matters related to:~~

[REDACTED]

The evaluation and assessment of the infant or toddler;  
Development and implementation of the infant's or toddler's IFSP including annual  
~~evaluations, assessments and periodic reviews.~~

[REDACTED]

CONFIDENTIAL - SECURITY INFORMATION  
[REDACTED]

[REDACTED]

CONFIDENTIAL - SECURITY INFORMATION  
[REDACTED]

[REDACTED]

[REDACTED]

[REDACTED]



## ANNUAL REVIEW OF AGREEMENT

The undersigned represent and acknowledge that they are duly authorized representative

[Redacted signature area]

2013-0-13

[Redacted signature area]

authorized to review this interagency agreement for their respective agency

Reviewer:  
Rm# 1-20-04

ANNUAL REVIEW OF AGREEMENT

The undersigned represent and acknowledge that they are duly authorized representative  
authorized to review this agreement for the school year 2018-2019.

Reviewed for school year. 2018-2019.

Executive Director

Date

*Yes*

*8/21/2018*

San Andreas Regional Center

Date

South East Consortium SELPA

**Anna**                      **os, Ed.D.**

*/21/2018*

Santa Clara SELPA I, II, III, IV and VII

Date

**Dewan. Ph.D.**

Santa Clara County Office of Education



### C. PROCESS FOR THE UTILIZATION OF LOW-INCIDENCE FUNDS

Low Incidence Equipment Funds and Low Incidence Service Funds are restricted for use for students in the following disability categories: hard of hearing, deaf, visual disability, orthopedically impaired, and deaf-blind. Low Incidence funds are administered through the SELPA IV Office. The Executive Council shall adopt a policy to guide the distribution of these funds.

### Certification of Annual Budget Plan Fiscal Year 2018-19

1. Check one, as applicable:

Single District

Multiple District

District/County

[Redacted]

(SELPA) Code **4304 NC**

**Santa Clara Area 4**

**May 30, 2018**

[Redacted]

**1290 Ridder Park Drive, MC277**

**San Jose**

**95131**

[Redacted]



